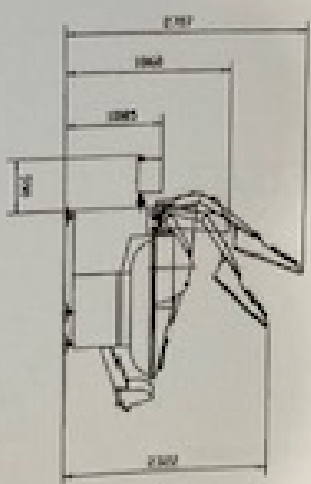


23 An diesen Seiten ca. 1000 mm freien Raum für Wartungsarbeiten lassen

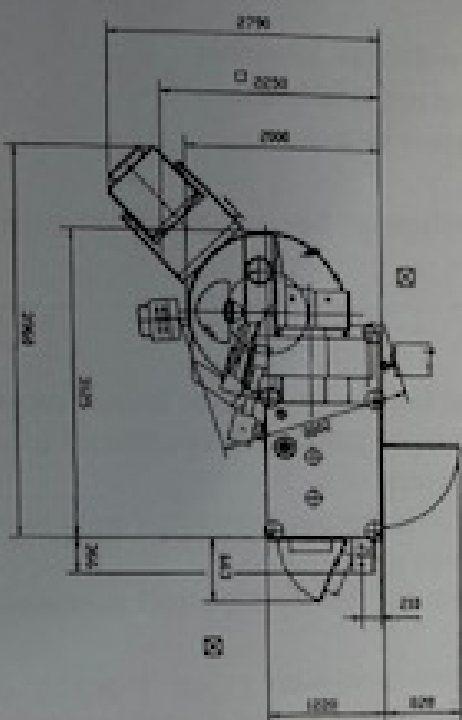
24 room for maintenance activities to allow min 1000 mm



- 25 erforderliche Torweite bei demontierten Behinderrad und eingebauter Beschöpfung
- 26 erforderliche Torweite bei demontierten Behinderrad und Beschöpfung
- 27 required door width for detached control panel and sitting device in tip over position
- 28 required door width for detached control panel and sitting device

Änderungen vorbehalten !
subject to change !

Hierzu gehören 302-0-463 BLATT 1-6



Eigentumsnr. 100 2788 - 46											
12-1	12-2	12-3	12-4	12-5	12-6	12-7	12-8	12-9	12-10	12-11	12-12
12-13	12-14	12-15	12-16	12-17	12-18	12-19	12-20	12-21	12-22	12-23	12-24
12-25	12-26	12-27	12-28	12-29	12-30	12-31	12-32	12-33	12-34	12-35	12-36
12-37	12-38	12-39	12-40	12-41	12-42	12-43	12-44	12-45	12-46	12-47	12-48
12-49	12-50	12-51	12-52	12-53	12-54	12-55	12-56	12-57	12-58	12-59	12-60
12-61	12-62	12-63	12-64	12-65	12-66	12-67	12-68	12-69	12-70	12-71	12-72
12-73	12-74	12-75	12-76	12-77	12-78	12-79	12-80	12-81	12-82	12-83	12-84
12-85	12-86	12-87	12-88	12-89	12-90	12-91	12-92	12-93	12-94	12-95	12-96
12-97	12-98	12-99	12-100	12-101	12-102	12-103	12-104	12-105	12-106	12-107	12-108
12-109	12-110	12-111	12-112	12-113	12-114	12-115	12-116	12-117	12-118	12-119	12-120
12-121	12-122	12-123	12-124	12-125	12-126	12-127	12-128	12-129	12-130	12-131	12-132
12-133	12-134	12-135	12-136	12-137	12-138	12-139	12-140	12-141	12-142	12-143	12-144
12-145	12-146	12-147	12-148	12-149	12-150	12-151	12-152	12-153	12-154	12-155	12-156
12-157	12-158	12-159	12-160	12-161	12-162	12-163	12-164	12-165	12-166	12-167	12-168
12-169	12-170	12-171	12-172	12-173	12-174	12-175	12-176	12-177	12-178	12-179	12-180
12-181	12-182	12-183	12-184	12-185	12-186	12-187	12-188	12-189	12-190	12-191	12-192
12-193	12-194	12-195	12-196	12-197	12-198	12-199	12-200	12-201	12-202	12-203	12-204
12-205	12-206	12-207	12-208	12-209	12-210	12-211	12-212	12-213	12-214	12-215	12-216
12-217	12-218	12-219	12-220	12-221	12-222	12-223	12-224	12-225	12-226	12-227	12-228
12-229	12-230	12-231	12-232	12-233	12-234	12-235	12-236	12-237	12-238	12-239	12-240
12-241	12-242	12-243	12-244	12-245	12-246	12-247	12-248	12-249	12-250	12-251	12-252
12-253	12-254	12-255	12-256	12-257	12-258	12-259	12-260	12-261	12-262	12-263	12-264
12-265	12-266	12-267	12-268	12-269	12-270	12-271	12-272	12-273	12-274	12-275	12-276
12-277	12-278	12-279	12-280	12-281	12-282	12-283	12-284	12-285	12-286	12-287	12-288
12-289	12-290	12-291	12-292	12-293	12-294	12-295	12-296	12-297	12-298	12-299	12-300
12-301	12-302	12-303	12-304	12-305	12-306	12-307	12-308	12-309	12-310	12-311	12-312
12-313	12-314	12-315	12-316	12-317	12-318	12-319	12-320	12-321	12-322	12-323	12-324
12-325	12-326	12-327	12-328	12-329	12-330	12-331	12-332	12-333	12-334	12-335	12-336
12-337	12-338	12-339	12-340	12-341	12-342	12-343	12-344	12-345	12-346	12-347	12-348
12-349	12-350	12-351	12-352	12-353	12-354	12-355	12-356	12-357	12-358	12-359	12-360
12-361	12-362	12-363	12-364	12-365	12-366	12-367	12-368	12-369	12-370	12-371	12-372
12-373	12-374	12-375	12-376	12-377	12-378	12-379	12-380	12-381	12-382	12-383	12-384
12-385	12-386	12-387	12-388	12-389	12-390	12-391	12-392	12-393	12-394	12-395	12-396
12-397	12-398	12-399	12-400	12-401	12-402	12-403	12-404	12-405	12-406	12-407	12-408
12-409	12-410	12-411	12-412	12-413	12-414	12-415	12-416	12-417	12-418	12-419	12-420
12-421	12-422	12-423	12-424	12-425	12-426	12-427	12-428	12-429	12-430	12-431	12-432
12-433	12-434	12-435	12-436	12-437	12-438	12-439	12-440	12-441	12-442	12-443	12-444
12-445	12-446	12-447	12-448	12-449	12-450	12-451	12-452	12-453	12-454	12-455	12-456
12-457	12-458	12-459	12-460	12-461	12-462	12-463	12-464	12-465	12-466	12-467	12-468
12-469	12-470	12-471	12-472	12-473	12-474	12-475	12-476	12-477	12-478	12-479	12-480
12-481	12-482	12-483	12-484	12-485	12-486	12-487	12-488	12-489	12-490	12-491	12-492
12-493	12-494	12-495	12-496	12-497	12-498	12-499	12-500	12-501	12-502	12-503	12-504
12-505	12-506	12-507	12-508	12-509	12-510	12-511	12-512	12-513	12-514	12-515	12-516
12-517	12-518	12-519	12-520	12-521	12-522	12-523	12-524	12-525	12-526	12-527	12-528
12-529	12-530	12-531	12-532	12-533	12-534	12-535	12-536	12-537	12-538	12-539	12-540
12-541	12-542	12-543	12-544	12-545	12-546	12-547	12-548	12-549	12-550	12-551	12-552
12-553	12-554	12-555	12-556	12-557	12-558	12-559	12-560	12-561	12-562	12-563	12-564
12-565	12-566	12-567	12-568	12-569	12-570	12-571	12-572	12-573	12-574	12-575	12-576
12-577	12-578	12-579	12-580	12-581	12-582	12-583	12-584	12-585	12-586	12-587	12-588
12-589	12-590	12-591	12-592	12-593	12-594	12-595	12-596	12-597	12-598	12-599	12-600
12-601	12-602	12-603	12-604	12-605	12-606	12-607	12-608	12-609	12-610	12-611	12-612
12-613	12-614	12-615	12-616	12-617	12-618	12-619	12-620	12-621	12-622	12-623	12-624
12-625	12-626	12-627	12-628	12-629	12-630	12-631	12-632	12-633	12-634	12-635	12-636
12-637	12-638	12-639	12-640	12-641	12-642	12-643	12-644	12-645	12-646	12-647	12-648
12-649	12-650	12-651	12-652	12-653	12-654	12-655	12-656	12-657	12-658	12-659	12-660
12-661	12-662	12-663	12-664	12-665	12-666	12-667	12-668	12-669	12-670	12-671	12-672
12-673	12-674	12-675	12-676	12-677	12-678	12-679	12-680	12-681	12-682	12-683	12-684
12-685	12-686	12-687	12-688	12-689	12-690	12-691	12-692	12-693	12-694	12-695	12-696
12-697	12-698	12-699	12-700	12-701	12-702	12-703	12-704	12-705	12-706	12-707	12-708
12-709	12-710	12-711	12-712	12-713	12-714	12-715	12-716	12-717	12-718	12-719	12-720
12-721	12-722	12-723	12-724	12-725	12-726	12-727	12-728	12-729	12-730	12-731	12-732
12-733	12-734	12-735	12-736	12-737	12-738	12-739	12-740	12-741	12-742	12-743	12-744
12-745	12-746	12-747	12-748	12-749	12-750	12-751	12-752	12-753	12-754	12-755	12-756
12-757	12-758	12-759	12-760	12-761	12-762	12-763	12-764	12-765	12-766	12-767	12-768
12-769	12-770	12-771	12-772	12-773	12-774	12-775	12-776	12-777	12-778	12-779	12-780
12-781	12-782	12-783	12-784	12-785	12-786	12-787	12-788	12-789	12-790	12-791	12-792
12-793	12-794	12-795	12-796	12-797	12-798	12-799	12-800	12-801	12-802	12-803	12-804
12-805	12-806	12-807	12-808	12-809	12-810	12-811	12-812	12-813	12-814	12-815	12-816
12-817	12-818	12-819	12-820	12-821	12-822	12-823	12-824	12-825	12-826	12-827	12-828
12-829	12-830	12-831	12-832	12-833	12-834	12-835	12-836	12-837	12-838	12-839	12-840
12-841	12-842	12-843	12-844	12-845	12-846	12-847	12-848	12-849	12-850	12-851	12-852
12-853	12-854	12-855	12-856	12-857	12-858	12-859	12-860	12-861	12-862	12-863	12-864
12-865	12-866	12-867	12-868	12-869	12-870	12-871	12-872	12-873	12-874	12-875	12-876
12-877	12-878	12-879	12-880	12-881	12-882	12-883	12-884	12-885	12-886	12-887	12-888
12-889	12-890	12-891	12-892	12-893	12-894	12-895	12-896	12-897	12-898	12-899	12-900
12-901	12-902	12-903	12-904	12-905	12-906	12-907	12-908	12-909	12-910	12-911	12-912
12-913	12-914	12-915	12-916	12-917	12-918	12-919	12-920	12-921	12-922	12-923	12-924
12-925	12-926	12-927	12-928	12-929	12-9						

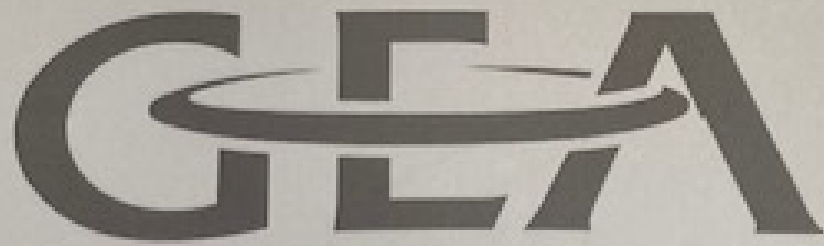
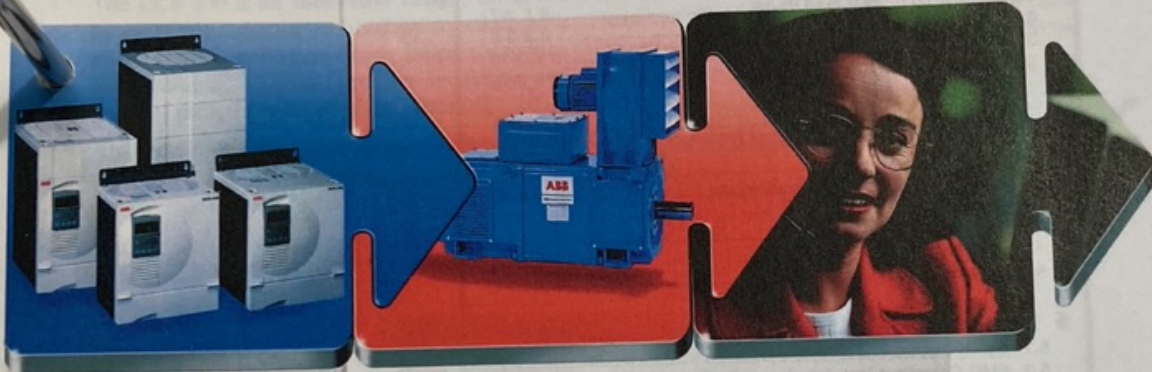


Table of Contents

Frame	5.050
Panel	5.060
Hydraulic pump	5.070
Lubrication	5.090
Fan	5.150
Noise Cover	5.250
Knife Cover	5.300
Bowl	5.400
Knife Shaft	5.500
Knife Head	5.027
Ejector	5.700
Loading Device	5.025

DCS Thyristor power converter for DC drive systems 20 to 1000 A 9 to 522 kW

Manual DCS 400



List of contents

MANUAL

1 DCS 400 - the compact-size DC drive	II K 1-3
2 System overview of DCS 400	II K 2-1
2.1 Environmental conditions	II K 2-2
2.2 DCS 400 power converter modules	II K 2-3
2.3 DCS 400 overload withstand capability	II K 2-4
2.4 Control and Display Units of the DCS 400	II K 2-6
3 Technical Data	II K 3-1
3.1 Module Dimensions	II K 3-1
3.2 Cross-sectional areas - Tightening torques	II K 3-3
3.3 Power losses	II K 3-5
3.4 Power section cooling	II K 3-6
3.5 Control board SDCS-CON-3A	II K 3-7
3.6 Power interface board SDCS-PIN-3A	II K 3-9
3.7 Field exciter SDCS-FIS-3A	II K 3-10
3.8 Circuit diagrams	II K 3-12
4 Overview of software	II K 4-1
4.1 General information about application Macros	II K 4-2
4.2 Application Macros	II K 4-4
4.3 Digital and analogue Inputs/Outputs	II K 4-22
4.4 Drive Logic	II K 4-24
4.5 Regulator functions	II K 4-27
4.6 Software Structure	II K 4-42
4.7 Parameter list	II K 4-44
5 Installation	II K 5-1
5.1 Safety instructions	II K 5-2
5.2 EMC Compliant Installation and Configuration for PDS	II K 5-4
5.3 Connection Examples	II K 5-17
6 Operating Instructions	II K 6-1
6.1 Panel	II K 6-2
6.2 Guided Commissioning	II K 6-7
6.3 Useful hints for commissioning	II K 6-20
6.4 Troubleshooting	II K 6-24
7 Serial interfaces	II K 7-1
7.1 Panel-port	II K 7-6
7.2 RS232-port	II K 7-7
7.3 Fieldbus interface	II K 7-8
Appendix	
A Accessories	II K A-1
Line chokes	II K A-1
Fuses	II K A-5
EMC filter	II K A-7
B Declaration of conformity	II K B-1
C Quick Installation & Commissioning guide	II K C-1
D Examples for basic parameter programming	II K D-1
Index	II K I-1
Instructions for software	II K E-1

1 DCS 400 - the compact-size DC drive

DCS 400 is a new generation of DC drives, which is rated from 9 to 522 kW and for use on all line supply voltages from 230 to 500 V.

Total use of air was the brief given to the drive's designers. The result is a DC drive that meets the needs of machine builders. It is:

★ as easy to handle as an analogue drive but with all the advantages of a digital drive

★ easy to design into machine equipment, being compact and having just the right number of features

★ easy to install and set up

The DCS 400 is an innovative design, using the latest semiconductor technology together with an advanced software which helps to reduce maintenance, increase product reliability and enables extremely rapid commissioning.

The DCS 400's small size brings substantial space savings to machine builders, allowing them to

integrate more accessories within the same space. The compact design has been partly achieved by a fully integrated field exciter, which includes the field fuse and choke.

Based on new IGBT technology used for the field exciter, there is no need for a field voltage adaptation transformer to match the line supply voltage with that of the motor.

The commissioning wizard - available on the control panel and the PC tool - makes start up of the drive extremely easy, by simply guiding the user through the start up procedure.

In addition, the DCS 400 contains application macros. By selecting a macro from a menu, the user can pre-select the software structure and the I/O connection, thus saving time and eliminating any errors.

The DCS 400 carries the CE Mark and is designed and produced according to the quality standard ISO 9001.





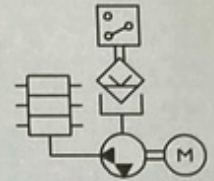
WOERNER

The Experts in Lubrication

- Subject to modifications -



Pump aggregate GMG-B



Use:

As pump aggregate in central lubrication systems

- for the delivery of oil, liquid grease or grease
- 1 or 2 pump outlets
- up to 20 outlets with progressive distributor flanged-on
- electric control and monitoring
- with function stirring without delivery

Technical data:

Admissible delivery pressure: at max. 250 bar

Number of pump elements: at max. 2

Delivery volume per stroke and element

with pump element 08:	0,08 cm ³
with pump element 16:	0,16 cm ³

Temperature range: -20 ... +60 °C
At low temperatures, grease penetration needs to be observed.

Mounting position: vertically

Material

Casing:	Aluminium
Pump element:	Steel
Reservoir:	Steel / Polyamide transparent
Gaskets:	NBR (Perbunan)

Medium: Oil and grease up to NLGI class 2 (Mind conditions of use of both the reservoir and filling level monitoring device!)

Drive:

Mains voltage:	24 VDC
Current at max.:	2,5A

Speed
(load-dependent): approx. 30 min⁻¹
System of protection: IP 55
(Depending on type of construction, the DC gear motor should only be used in pulse mode. For other modes of operation, three-phase current motors are of advantage (e.g. Pump aggregate GMA-C).)

Pump aggregate GMG-B

EUGEN WOERNER GmbH & Co. KG
Postfach 1661 DE-97866 Wertheim
Am Eichamt 8 DE-97877 Wertheim
Tel. +49 (0) 9342 803-0 info@woerner.de
Fax. +49 (0) 9342 803-202 www.woerner.de

Leaflet-No. 0704.01.08 EN
Replaces No. 0704.08.07 EN

Page 1 of 8



Konformitätserklärung
gemäß EG-Richtlinie Maschinen 89/392/EWG, Anhang II

Hiermit erklären wir

Krämer +Grebe
Convenience Food Systems
Im Ruttert
D - 35216 Biedenkopf - Wallau

daß der

Schneidmischer 325 Liter
SM 325
Type : 302
Maschinen-Nr.: 302/0120-99

konstruiert, produziert und geprüft wurde nach:

EG-Richtlinie Maschinen 89/392/EWG, Anhang I
EG-Richtlinie EMV 89/336/EWG
EG-Niederspannungsrichtlinie 73/23/EWG

Commissioning Guide and Maintenance Instructions for Internally Ventilated DC Motors GN ..N with Roller Bearings

TABLE OF CONTENTS

1 Safety and Commissioning Information for Low-Voltage Machines (in accordance with Low-Voltage Guideline 73/23/EWG)	2
1.1 General.....	2
1.2 Appropriate Use.....	2
1.3 Transportation, Storage.....	3
1.4 Long-term storage.....	3
1.5 Setup	4
1.6 Electrical Connection.....	5
1.7 Operation.....	6
1.8 Electromagnetic Compatibility	6
1.9 Warranty	6
2 Information about the Product	7
2.1 Motor Type, Product Number and Technical Data.....	7
2.2 Types of Ventilation	7
2.3 Cooling	8
2.4 Necessary Cooling Air Volume and Pressure for fGN Motors	8
2.5 Fan Assignment for Series Motors	9
2.6 Noise Intensity for Series Motors	9
3 Operation	10
3.1 Instructions for Initial Commissioning.....	10
3.2 Wiring Diagrams	10
3.3 Notes	10
3.4 Allowed Radial Forces (with Standard Motor).....	11
3.5 Operating Disturbances.....	12
4 Corrective Maintenance	13
4.1 Brush-Holders, Carbon Brushes and Commutator of the Main Motor	13
4.2 Bearings	15
4.3 Intake opening for cooling air	15
4.4 Filters	16
5 List of Spare Parts and Sectional Drawing	16
6 Decommissioning, Removal, and Disposal	17

Always keep these operating instructions at hand at the machine's place of operation in the tool drawer or an appropriate container. The publication of this technical description invalidates all earlier information in previous documentation.